

A photograph of a paved path in a park, lined with trees and lush greenery. The path leads into the distance, flanked by tall trees on the left and dense plants on the right. The scene is bathed in soft, natural light, creating a serene atmosphere. Overlaid on the center of the image is the text "EVERYTHING YOU Wished FOR". "EVERYTHING YOU" and "FOR" are in a bold, sans-serif font, while "Wished" is in a large, elegant script font. A small, stylized star with a trail of smaller stars is positioned above the letter 'i' in "Wished".

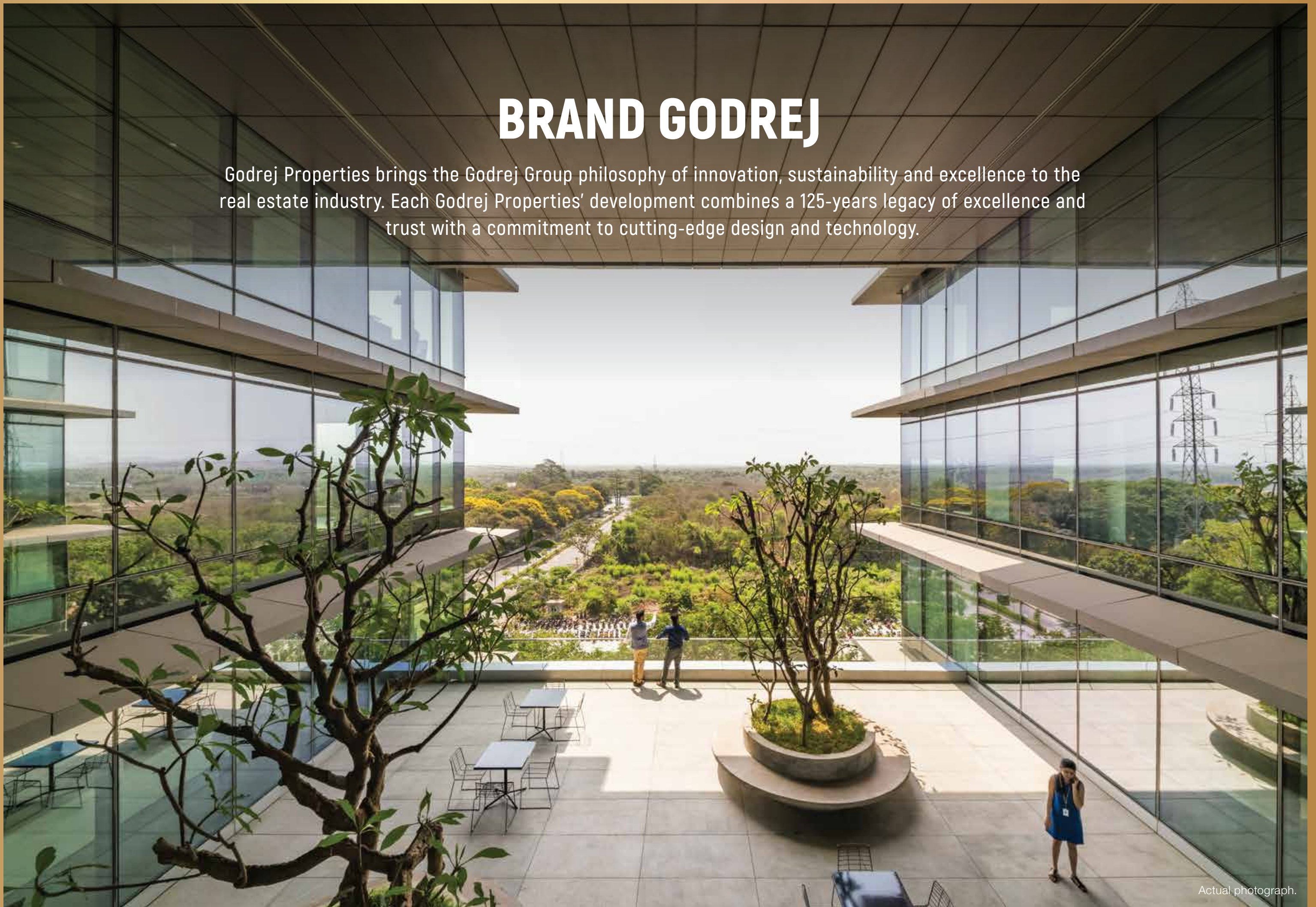
EVERYTHING YOU *Wished* FOR

Actual photograph.



# BRAND GODREJ

Godrej Properties brings the Godrej Group philosophy of innovation, sustainability and excellence to the real estate industry. Each Godrej Properties' development combines a 125-years legacy of excellence and trust with a commitment to cutting-edge design and technology.



Actual photograph.



# AHMEDABAD DEMOGRAPHIC OVERVIEW

## THE TIMES OF INDIA

**RANKED 1<sup>ST</sup> - INDIA'S BEST CITY TO LIVE IN**  
2012 | INDIA RANKING

## TIME

**WORLD'S 50 GREATEST PLACES**  
2022 | WORLD RANKING

## FORBES

**RANKED 3<sup>RD</sup> - FASTEST GROWING CITIES  
OF THE DECADE**  
2010 | WORLD RANKING

## EASE OF LIVING INDEX

**RANKED 3<sup>RD</sup> - INDIA'S BEST CITY TO LIVE IN**  
2020 | INDIA RANKING



Stock image for representative purpose only.



# AHMEDABAD INVESTMENT OPPORTUNITIES

**DHOLERA  
SIR**

**DEDICATED  
FREIGHT  
CORRIDOR**

**INDUSTRIAL  
CORRIDOR  
DELHI-MUMBAI**

  
**KEY INVESTMENT  
DRIVERS**

**AUTOMOBILE  
MANUFACTURING**

**GIFT CITY  
GANDHINAGAR**

**BULLET  
TRAIN**

Stock image for representative purpose only.



**GODREJ GARDEN CITY**  
AHMEDABAD

# AN INSPIRING LIFESTYLE AT A LANDMARK ADDRESS

Unwind amidst a 80.94 hectares green oasis that's filled with best-in-class amenities to pamper you. Breathe in freshness every day amid purer air and lush green spaces. Come, live the life you've been dreaming of.



Actual photograph.



# ONE DREAM HOME, MULTIPLE ROUTES



Not to scale. | Source: Google Maps

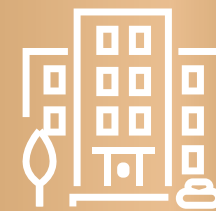
# GODREJ GARDEN CITY, AN UPCOMING CITY CENTRE



EASY CONNECTIVITY  
TO S.G. HIGHWAY



AHMEDABAD INTL  
AIRPORT JUST 22 MINUTES\*  
VIA S.P. RING ROAD



WITHIN  
AMC LIMITS



NEIGHBOURHOOD OF  
6000+ FAMILIES

Source: Google Maps. Drive time basis normal traffic conditions.



# CONNECTIVITY AND ACCESSIBILITY REDEFINED



- + HOSPITALS
- 📖 SCHOOLS
- 🎡 LEISURE & RECREATION
- 🎓 COLLEGES
- ✈️ TRAVEL

Stock image for representative purpose only.

Source: Google Maps. Drive time basis normal traffic conditions.



# LAUNCHING A NEW MILESTONE IN OUR EPIC JOURNEY

INAUGURATED BY NARENDRA MODI



ORCHARD



TIVOLI



EDEN



CARMEL



PINECREST



VRINDAVAN



GREEN GLADES



VANAANTA



VANAANGAN



CELESTE



Actual photograph / Artist's impression. Not an actual site photograph.



# A LIFE WHERE EVERY DAY IS A CELEBRATION





# HIGHLIGHTS OF GODREJ GARDEN CITY



**HANDOVER  
4667 UNITS | 5.8 MN SQ. FT.**



**MASTER LAYOUT PLAN BY SKIDMORE,  
OWINGS AND MERRILL**



**UPCOMING FLYOVER CONNECTS TO  
S.G. ROAD IN JUST 2 MIN**



**1.2 KMS OF BOULEVARD ROAD  
WITH WALKWAY AND CYCLING TRACK**



**WE ARE NOW  
6000+ HAPPY FAMILIES**



**16 HECTARES OF DEDICATED GREENERY  
WITH 13000+ FULLY GROWN TREES**



**PRESENTING**  
**CELESTE**

---

**2 & 3 BHK LIFESTYLE HOMES**





Artist's impression. Not an actual site photograph.



# 3 CLUBHOUSES, INFINITE DELIGHT

Revel in the finest amenities spread across 3 Clubhouses that promise delight for folks across all ages.  
Enjoy your leisure time as you cherish every amazing moment.



# WATCH YOUR LITTLE ONES GO BIG ON FUN

At Club Rejuve, we offer a plethora of both indoor and outdoor activities that are sure to be a source of endless fun and joy for your kids.

Stock image for representative purpose only.

## CLUB REJUVE

### INDOOR AMENITIES



TT and  
Indoor Game



Wifi Enabled  
Library/Activity Room



Children  
Play Area



Sensory Development  
Play Zone



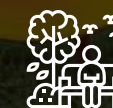
Toddler  
Play Court



Maze  
Square



Educational Garden  
For Kids



Seating Zone  
For Parents



Multipurpose  
Sports Court



Bleacher  
Seats



# DRIVE AWAY BOREDOM AS YOU DIVE HEADFIRST INTO INDULGENCE

With a wide array of indoor and outdoor amenities, come immerse yourself in recreational experiences that are sure to rejuvenate you. At Club Aqua, you're sure to find a splash of indulgence in everything.



Stock image for representative purpose only

## CLUB AQUA

### INDOOR AMENITIES



Swimming Pool



Cafe And Lounge



Gym



Open Gym



Reflexology Pathway



Walking Track



Swing Grove



Resting Zone



Flower Garden



Yoga Lawn



Pet Corner

### OUTDOOR AMENITIES



# MAY THE GOLDEN YEARS BE THE BEST YEARS

With an entire clubhouse dedicated to senior citizens, Club Vista has a plethora of amenities to enjoy. Here, both indoor and outdoor activities come together to create a refreshing and joyful living experience for your elders as they live out their golden years.



Stock image for representative purpose only.

## CLUB VISTA

### INDOOR AMENITIES



Party Hall



Multipurpose Hall  
& Indoor Games



Stepped  
Seats



Stage



Projection  
Screen



Party Lawn



Jogging  
Track



Barbeque  
Square



Herb  
Garden



Party Deck

### OUTDOOR AMENITIES



# A GREEN HAVEN OF CELEBRATION

Host a get-together or two and weave beautiful memories amid 0.67 hectares of lush green land.



Stock image for representative purpose only.



# RETAIL THERAPY, JUST A WALK AWAY

With 100+ retail stores in our premises, greet convenience right at your doorstep.



Artist's impression. Not an actual site photograph.



# CLUSTER MASTERPLAN



2 BHK HOMES 3 BHK HOMES



2.45 Hectares with  
0.67 Hectares of Green Land



3 Exclusive Clubhouses Spread  
Over 3716.12 Mt<sup>2</sup>



25+ Fine Amenities

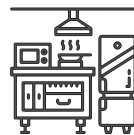


# WELCOME TO EUROPEAN-THEMED HOMES

## 2 & 3 BHK UNIT PLAN



Homes with  
Balcony



Open Kitchen



Zero Wastage  
in Passages

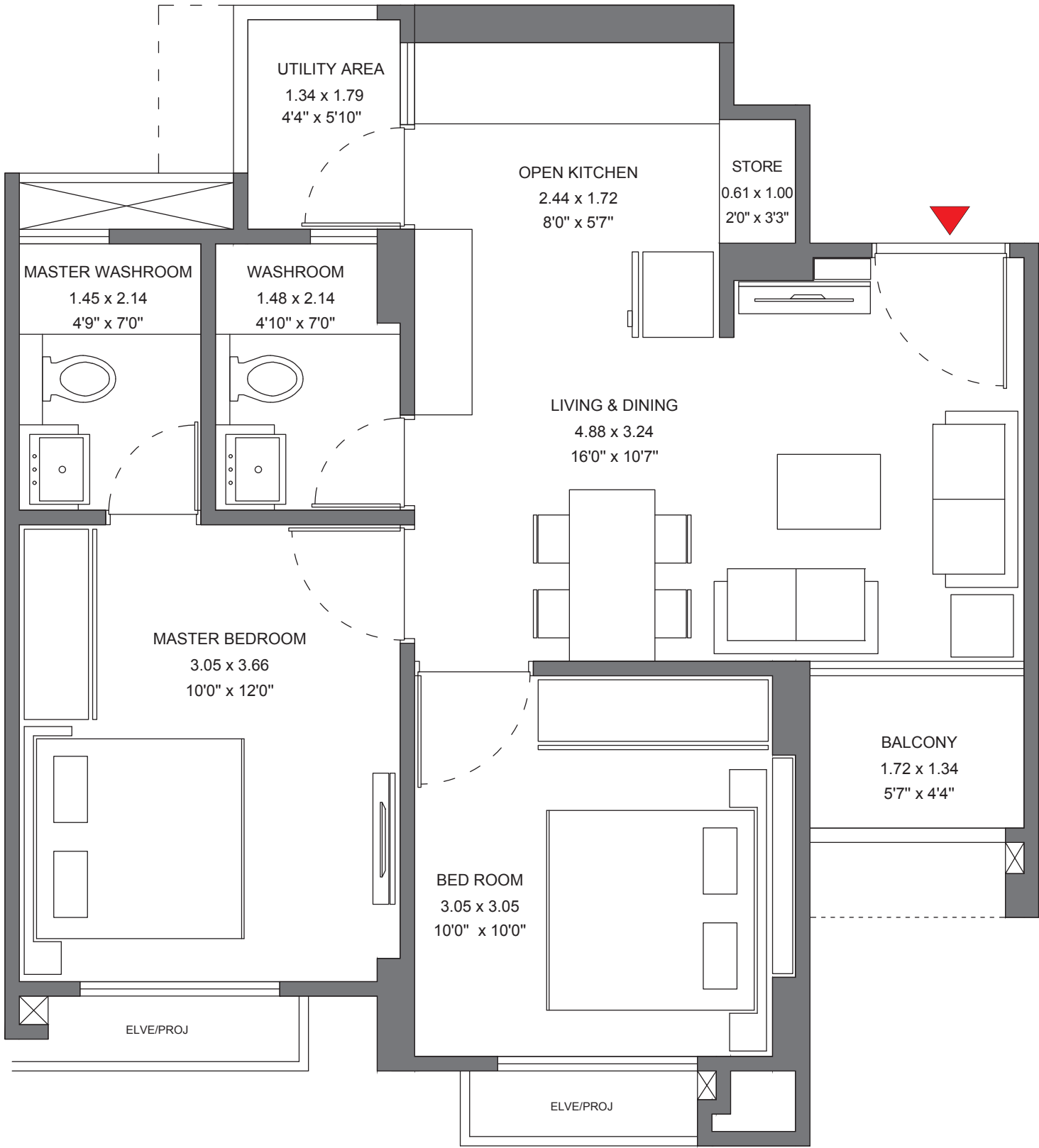


Efficient Use  
of Space



# YOUR DREAM HOME, THOUGHTFULLY-DESIGNED

## 2 BHK Unit Plan

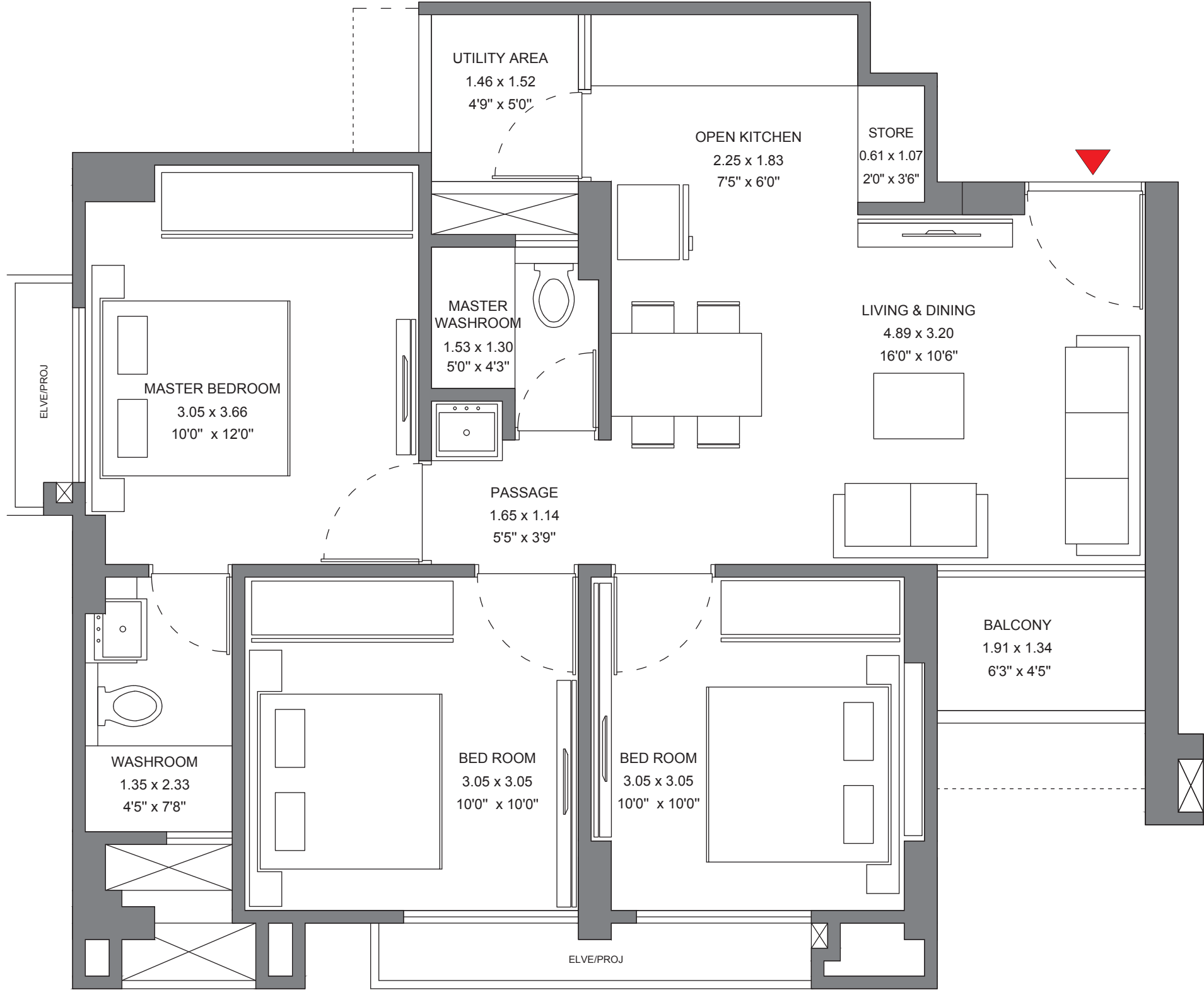


CONFIGURATION	2 BHK
RERA CARPET - M <sup>2</sup>	49.68
RERA EXCLUSIVE - M <sup>2</sup>	4.15
TOTAL AREA M <sup>2</sup>	53.83
TOTAL AREA FT <sup>2</sup>	580
TOTAL AREA FT <sup>2</sup> RANGE	577 - 582



# YOUR DREAM HOME, THOUGHTFULLY-DESIGNED

## 3 BHK Unit Plan



CONFIGURATION	3 BHK
RERA CARPET - M <sup>2</sup>	60.82
RERA EXCLUSIVE - M <sup>2</sup>	4.38
TOTAL AREA M <sup>2</sup>	65.2
TOTAL AREA FT <sup>2</sup>	702
TOTAL AREA FT <sup>2</sup> RANGE	701 - 707



# SPECIFICATIONS

## STRUCTURE

RCC FRAMED STRUCTURE

## FLOORING

LIVING/DINING/  
BEDROOMS

VITRIFIED TILES

PASSAGES

VITRIFIED TILES

ENTRANCE LOBBY

VITRIFIED TILES

BALCONY

ANTISKID VITRIFIED TILES

## WALL FINISHING

EXTERNAL

ACRYLIC EMULSION PAINT

INTERNAL

CEMENT PLASTER WITH PUTTY FINISH

LIFT LOBBY

PAINT FINISH

## LIFT

2 LIFTS IN ALL BLOCKS

## KITCHEN

FLOORING

VITRIFIED TILES

WALL FINISHES

CEMENT PLASTER WITH PUTTY FINISH

KITCHEN COUNTER

GRANITE COUNTER

FITTINGS

STAINLESS STEEL SINK

DADO

VITRIFIED TILE

OTHERS

ELECTRICAL POINT FOR WATER PURIFIER,  
EXHAUST FAN AND WASHING MACHINE.  
PLUMBING PROVISION IN WASH AREA

## DOORS

FRAME

PRE FABRICATED DOOR / HARD WOOD

MAIN DOOR

PRE FABRICATED DOOR /  
FLUSH DOOR WITH VENEER

INTERNAL DOORS

PRE FABRICATED DOOR /  
FLUSH DOOR WITH LAMINATE / PAINT FINISH

## WINDOWS

ALL ROOMS

ALUMINUM SLIDING WINDOWS

## TOILETS

FLOORING

VITRIFIED TILES

DADO

VITRIFIED TILES

FITTINGS

WC  
UNDER SINK BASIN  
TWO IN ONE SHOWER MIXER, HEALTH FAUCET  
ELECTRICAL AND PLUMBING PROVISION FOR  
GEYSER

## ELECTRICALS

CONCEALED COPPER WIRING  
MODULAR TYPE SWITCHES  
AC POINTS IN LIVING ROOM AND ALL BEDROOMS  
MINIATURE CIRCUIT BREAKERS (MCBs)  
TELEPHONE POINT/DATA POINT IN LIVING ROOM  
TV POINT IN LIVING ROOM AND ALL BEDROOMS

## POWER BACK-UP

DG BACK-UP FOR LIFT AND COMMON AREAS IN BUILDING



**A LIFESTYLE DRAPED IN JOY AND DELIGHT**





Artist's impression. Not an actual site photograph.





Artist's impression. Not an actual site photograph.



Joint Development Partner



+91 99984 92878



Project registered as: CELESTE | RERA Registration No: PR/GJ/AHMEDABAD/AHMEDABAD CITY/AUDA/MAA10290/080622 Available at website <https://gujrera.gujarat.gov.in>.

Site Office: Godrej Garden City, Behind Nirma University, Off Sarkhej Gandhinagar Highway, Jagatpur, Ahmedabad - 382 470.

This sale is subject to terms of application form and Agreement for sale. Recipients are advised to apprise themselves of the necessary and relevant information of the project prior to making any purchase decisions. The furniture, accessories, paintings, items, electronic goods, additional fittings/fixtures, decorative items, false ceiling including finishing materials, shades, sizes and colour of the tiles and other details shown in the image are only indicative in nature and are only for the purpose of illustrating/indicating a possible layout and do not form part of the standard specifications/amenities/services to be provided in the flat. The recipients acknowledge agree and undertake to not hold the Company or any of its affiliates liable/responsible for any information stated, representation(s)/offer(s) made by any third parties to the user/customer(s) not make any claims/demands on the Company or any of its affiliates with respect thereto. T&C Apply. The official website of Godrej Properties Ltd. is [www.godrejproperties.com](http://www.godrejproperties.com) Please do not rely on the information provided on any other website.